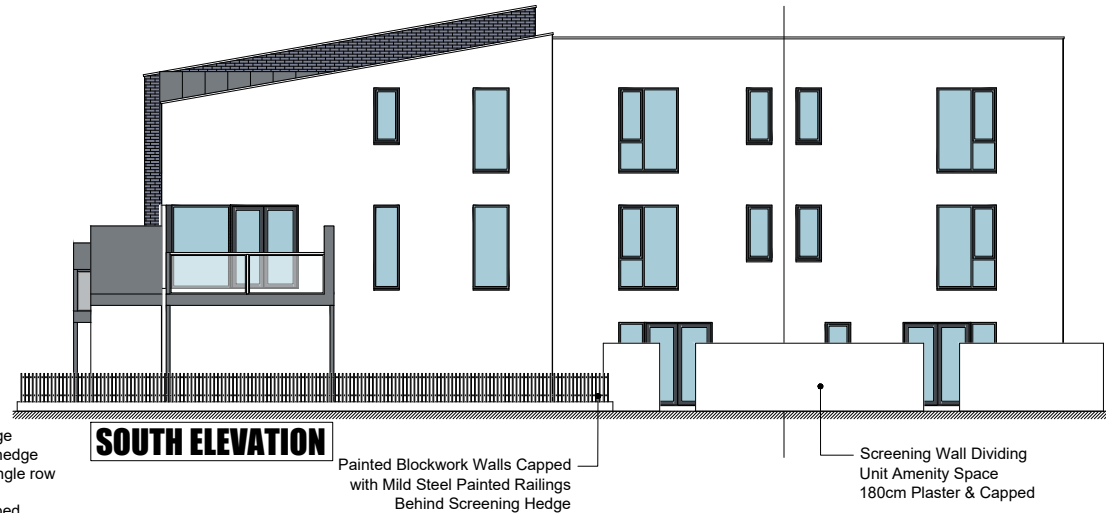


**DUPLEX BLOCK: D KILBARRY**

**09no. Units**  
**1 Bed Units No: 28-31**  
**2 Bed Units No: 23-27**



Sustainable Urban Housing:  
 Design Standards for New Apartments  
 Duplex Block B Units - 2bed/4p Apartment

	Area Requirements	Type 1	Type 2	Type 3
Floor Area	73m <sup>2</sup>	103.3	103.1	97.8
Agg. Living Area	30m <sup>2</sup>	30.1	30.6	31.4
Agg. Bedroom Area	24.4m <sup>2</sup>	26.1	24.8	25.2
Storage	6m <sup>2</sup>	8.2	9.0	8.4
Double Bed	11.4m <sup>2</sup>	11.4	11.7	12.2
Master Bed	13m <sup>2</sup>	14.8	13.0	13.0
Living Room Width	3.6m	4.2	3.7	4.4
Private Amenity	7m <sup>2</sup>	Varies	37.3	16.7

Sustainable Urban Housing:  
 Design Standards for New Apartments  
 Duplex Block B Units - 1bed Apartment

	Area Requirements	Type 4	Type 5
Floor Area	45m <sup>2</sup>	53.2	53.1
Agg. Living Area	23m <sup>2</sup>	23.0	23.0
Agg. Bedroom Area	11.4m <sup>2</sup>	11.4	12.1
Storage	3m <sup>2</sup>	3.1	2.9
Double Bed	11.4m <sup>2</sup>	11.4	12.1
Living Room Width	3.3m	4.2	3.7
Private Amenity	5m <sup>2</sup>	6.7	8.4

Residential Development,  
 Kilbarr, Co. Cork

Duplex Block B - Units

Unit Type	Bed	Area (m <sup>2</sup> )	Key Colour	Quantity
1	1	103.3	Green	3
2	1	103.1	Blue	1
3	1	97.8	Purple	1
4	1	53.2	Yellow	3
5	2	53.1	Orange	1

Duplex Block B	Area (M <sup>2</sup> )
Total Residential Development Area	775.6
Development Footprint	340.0

Rev	DESCRIPTION	DATE	BY
1	ISSUED FOR PLANNING APPLICATION	29.06.22	MOK
Rev	DETAIL		

**IMPORTANT TO BE READ**  
 © THIS DRAWING IS COPYRIGHT

THIS DRAWING OR ANY PART THEREOF SHALL ONLY BE USED FOR THE PURPOSES SPECIFIED IN THE STAGE BOX OF THE TITLE SHEET. ALL CONSTRUCTION METHODS, MATERIALS, SERVICES AND INSTALLATIONS TO BE IN ACCORDANCE WITH ALL BUILDING REGULATIONS AND CODES OF PRACTICE AT TIME OF CONSTRUCTION. ALL SUB-CONTRACTORS ARE ULTIMATELY RESPONSIBLE FOR ENSURING COMPLIANCE WITH REGULATIONS WITHIN THEIR OWN TRADE. ALL TRADES TO CHECK DIMENSIONS ON SITE PRIOR TO CONSTRUCTION OR FABRICATION. FIGURED DIMENSIONS TO BE TAKEN ONLY. ARCHITECTS TO BE INFORMED IMMEDIATELY OF ANY DISCREPANCIES BEFORE WORK PROCEEDS. THIS DRAWING IF NOT DENOTED FOR CONSTRUCTION MAY BE SUBJECT TO ALTERATIONS FOR CONSTRUCTION. THIS DRAWING SHOULD NOT BE REPRODUCED WITHOUT PRIOR WRITTEN PERMISSION OF THE COPYRIGHT OWNERS. REVISION DESCRIPTION TO BE CHECKED FOR DESCRIPTION OF CHANGES AND PROJECT STAGE. IF IN DOUBT, ASK!

Stage Abbreviations:  
 SU-Survey, SK-Sketch, PP-Preplanning, PA-Planning Application, FI-Further Information, AP-Appeal, RC-Response To Conditions, TE-Tender, FC-Fire Cert/, LE-Contract / Legal, CO-Construction, AB-As Built.

**D M N A** Doyle McDonogh Nash  
 Architects Landscape Architects  
 21 Patrick's Hill, Cork. T: 0214518371 E: info@dmnarchitects.ie

CLIENT:  
**CORK COUNTY GAA BOARD**

JOB TITLE:  
**RESIDENTIAL DEVELOPMENT AT KILBARRY, CO. CORK**

DRG. TITLE:  
**DUPLEX BLOCK: D BOUNDARY TREATMENTS (ELEVATIONS)**

Drawn By:	Checked By:	Job No:	Drawing Number:	Revision:	Stage:
MO'K	SD	19012	2113	1	PA
SCALE: 1:200@A3					